



**Blastrac bv**  
 Utrechthaven 12  
 3433 PN Nieuwegein  
 Netherlands  
 +31(0)30-6018866  
 +31(0)30-6018333

Project description	BMS 220 ADB for multi loader
Drawing number	PJ15.1166.03
Blastrac number	E09376/GLOBAL
Power supply	48V
Input lead	--
Control Voltage	48Vdc
Year of Manufacturing	2015
Remarks	As built
Created on	25-1-2013 by KG
Edit date	19-12-2016 by HvdB
	Number of pages 11





### WIRE COLOR

Plus (24VDC) -RED  
 Hook-up wire --  
 Minus / Ground (24VDC) BLACK

### SYMBOL CODE

11 F 11  
 11 11  
 - Running number  
 - Symbol letter  
 - Schedule page

Colour abbreviations IEC 60757

- BK Black
- BN Brown
- BU Blue
- GD Gold
- GN Green
- GNVE Green/Yellow
- GY Grey
- OG Orange
- PK Pink
- RD Red
- SR Silver
- TQ Turquoise
- VT Violet
- WH White
- YE Yellow

### CORE CODE

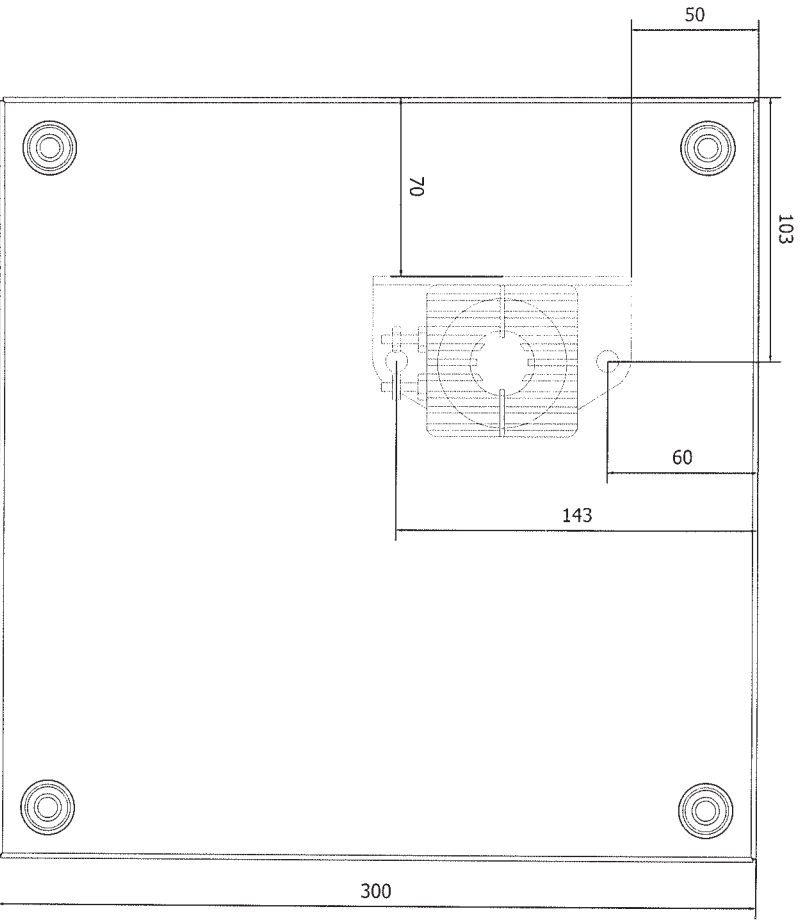
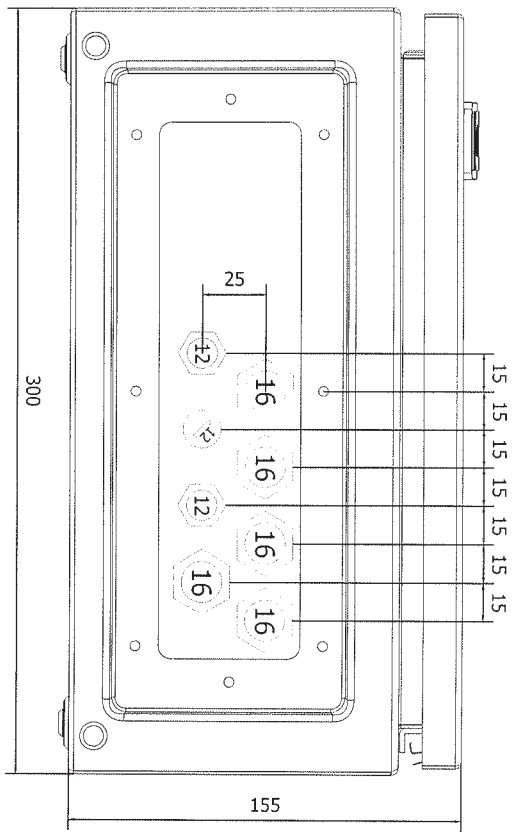
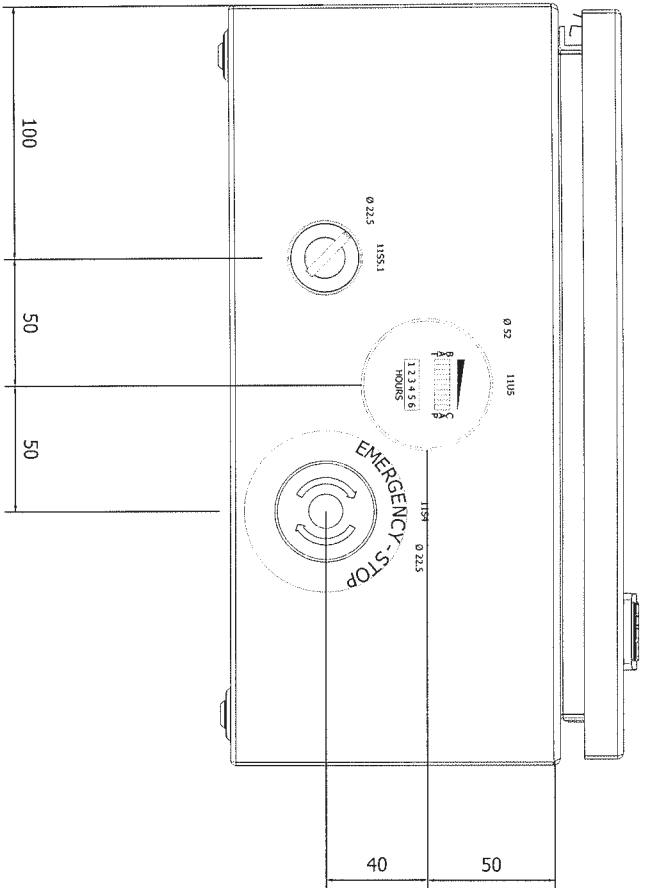
11 11  
 - Running number

### DRAWING NUMBER

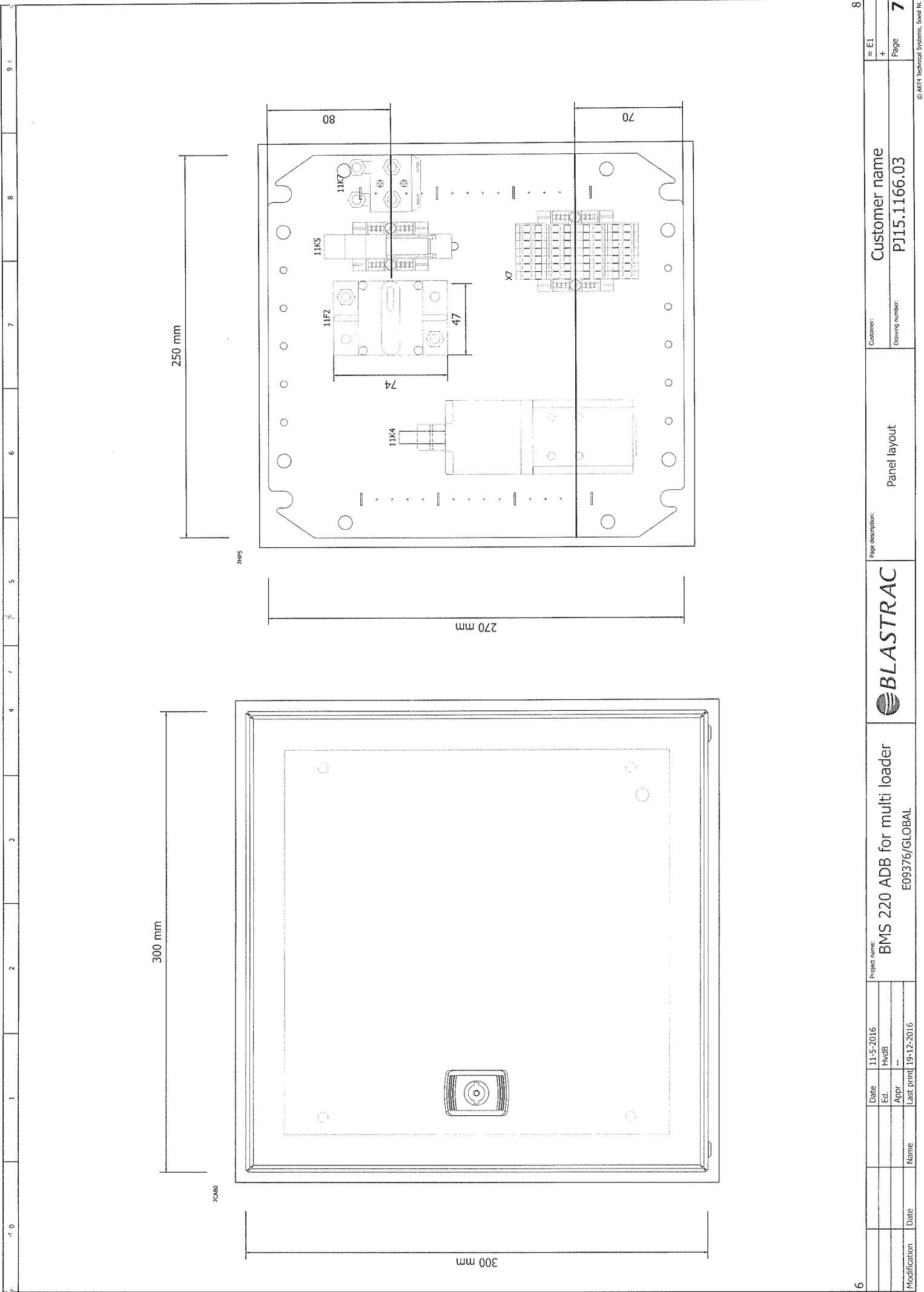
PJ###.###.###  
 - Revision number  
 - Archive number  
 - Year

3		Date		16-2-2015	Project name		BMS 220 ADB for multi loader		BLASTRAC		Page description		Legend		Customer		Customer name		= EI	
		Ed.		KG															+	
Modification		Date			Appr		Last print		19-12-2016				Drawing number		PJ15.1166.03				Page	
																			4	

1	2	3	4	5	6	7	8	9
	auxiliary contact	hulpcontact	signal light	signaallamp		Safety fuse	smeltveiligheid	
	Power contact	vermogenscontact	horn	hoorn		Fused switch, three-pole	schakelbare scheid	
	NO contact, opens with time delay	maakcontact, vertraagd open	apm.meter	amperemeter		Fused disconnect, three-pole	scheid "klapbak"	
	NO contact, closes with time delay	maakcontact, vertraagd sluitend	runninghour counter	urenreiler		Main switch	hoofdschakelaar	
	NC contact, opens with time delay	verbreekcontact, vertraagd open	transformer	transformator		Circuit breaker, single-pole	installatieautomaat 1-polig	
	NC contact, closes with time delay	verbreekcontact, vertraagd sluitend	Contactor coil relay coil	spoel		Circuit breaker, two-pole	installatieautomaat 2-polig	
	Pushbutton rebound	drukknop terugverend	Contactor/relay coil, with pick-up delay	spoel met opkomvertraging		Circuit breaker, three-pole	installatieautomaat 3-polig	
	Pushbutton locking	drukknop blijvend	Contactor/relay coil, with drop-out delay	spoel met afvalvertraging		Power circuit breaker motor overload switch with switch mechanism	motorbeveiligingsschakelaar	
	Rotary switch rebound	tip draaischakelaar	Contactor pulse coil relay pulse coil,	spoel puls		Valve	elektrisch bediende klep	
	Rotary switch locking	draaischakelaar	Tube light	TL verlichting		Resistor with movable contact	regelbare weerstand	
	Emergency stop rotary unlock	noodstop met draibare vrijgave	Resistor / Heating	weerstand verwarming		Terminal	rijgklem	
	Thermostatic switch	thermostaat hygrostaat	Socket	wandcontactdoos		Terminal with fuse	rijgklem met zekering	
	Pressure switch	drukschakelaar	Current transformer	stroomtransformator		Rectifier	gelijkrichter	
	Limit switch	eindschakelaar						
	Proximity switch	nadeningsschakelaar						
	Pull or pulcord switch	Trek of trekkoord schakelaar						



Modification		Date		Name		Date		Ed.		Appr.		Last print		19-12-2016	
5															
Project name: BMS 220 ADB for multi loader															
E09376/GLOBAL															
BLASTRAC															
Page description: Panel layout															
Customer: Customer name															
Drawing number: PJ15.1166.03															
= E1															
+ Page															
6															
7															



9

8

Modification	Date	Name

Date	11-5-2016
Ed.	HvdB
Appr	--
Last print	19-12-2016

**BLASTRAC**

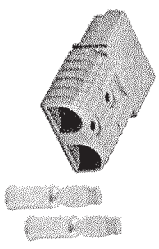
Project name:  
**BMS 220 ADB for multi loader**  
 E09376/GLOBAL

Customer:	Customer name
Drawing number:	PJ15.1166.03
Page	7

Wire / Cable length measured from cable gland

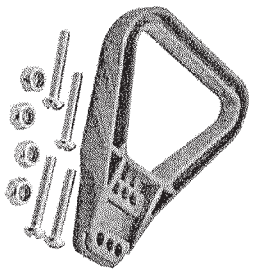


Parts shipped loose



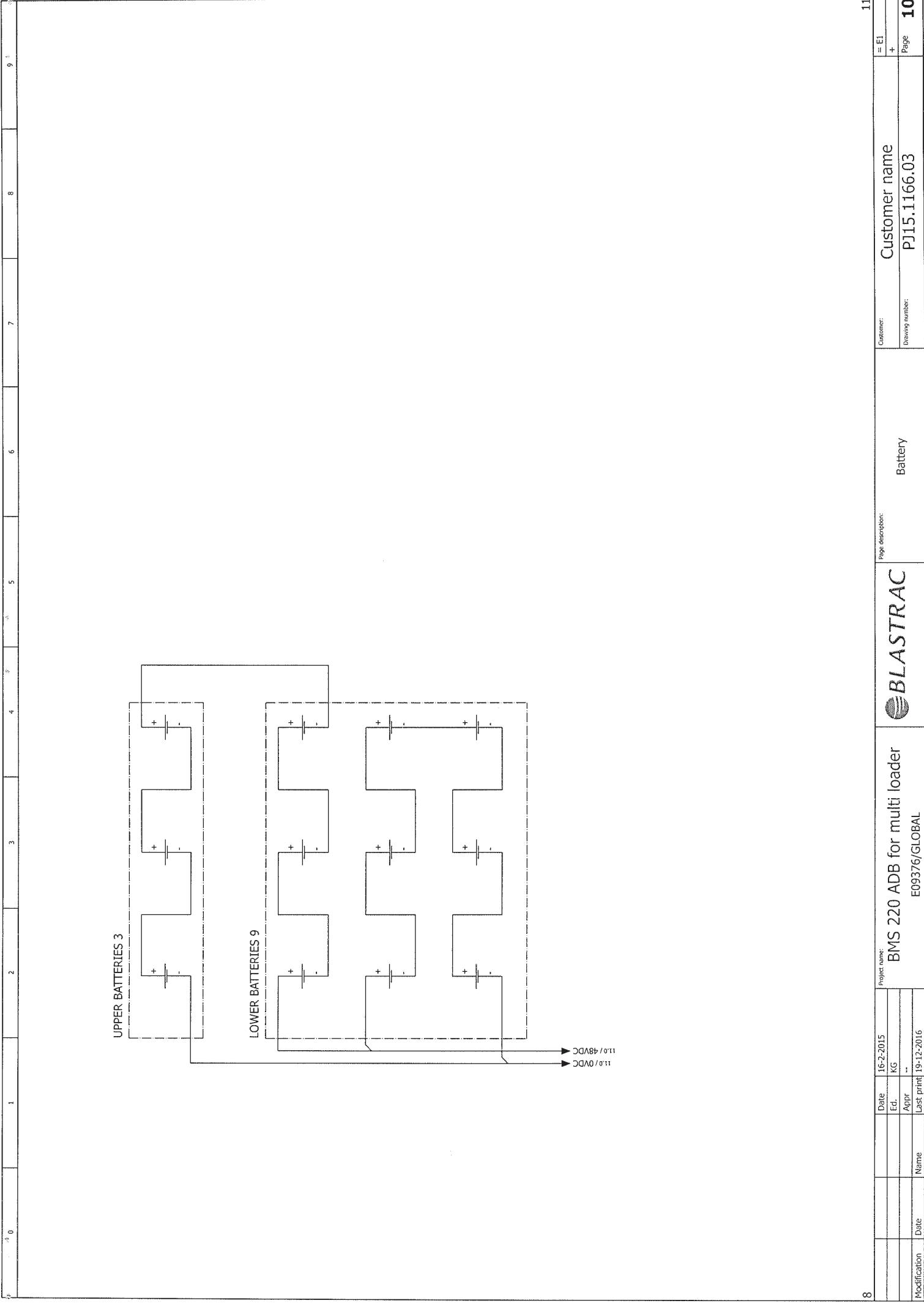
Large (175A)  
1x

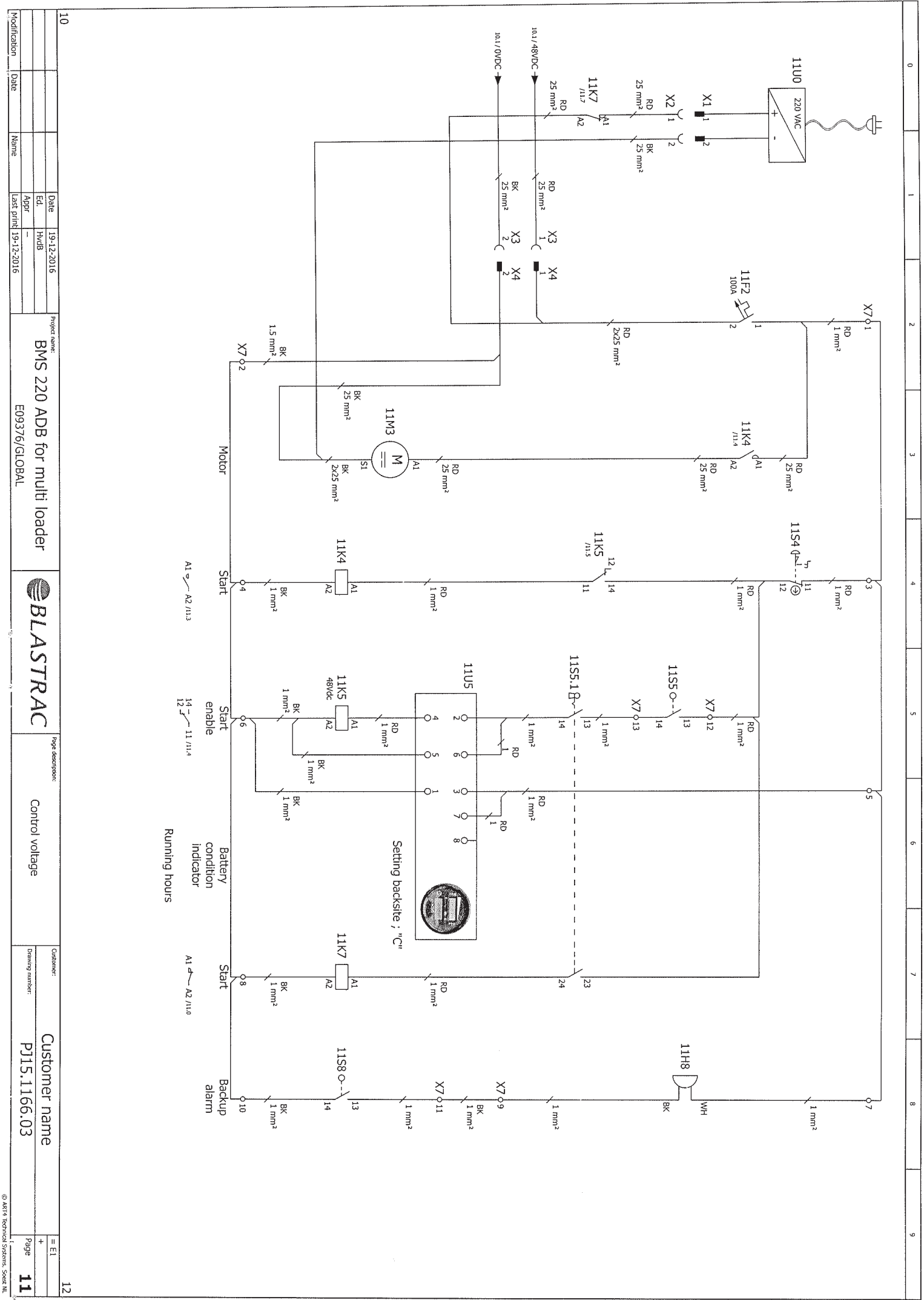
2x  
Large for  
175A connector



Modification	Date	Name	Date	Edi.	Appr.	Last print	Project name	Page description	Customer	Drawing number	Page
			19-1-2016	HvdB			BMS 220 ADB for multi loader	Cable layout	Customer name	PJ15.1166.03	8
			19-12-2016				E09376/GLOBAL				3







Modification	Date	Name

Project name:	Date
BMS 220 ADB for multi loader	19-12-2016
Appr	Edi
	HvdB
	Last print
	19-12-2016



Page description:	Control voltage
-------------------	-----------------

Customer name	PJ15.1166.03
Ordering number:	

# Parts list

device tag	Quantity	designation	Type number	Brand	Blastrac number
-X1	1	Accu plug small SB 175 175A Blauw	6326G5		E10741
-X1	1	Isolation cap red 25mm2	ISOLATION CAP RED 25MM2		
-X2	1	Accu plug small SB 175 175A Blauw	6326G5		E10741
-X2	1	Handgriep rood voor SB 175A	995G3/RED		
-X3	1	Accu plug small SB 175 175A Blauw	6326G5		E10741
-X3	4	Isolation cap red 25mm2	ISOLATION CAP RED 25MM2		
-X3	2	Cabletag eye M8 copper 25mm2	23DE25-85V	Calpe	
-X3	5	Internal wire 25mm2 red	MONTAGESNOER 25MM R	LAPP	
-X3	5	Internal wire 25 mm2 black, 90 degr.	30-309025001	Helukabel	
-X3	5	Internal wire 1.0mm2 black, 90 degr.	30-309001001	Helukabel	
-X3	5	Internal wire 1.0mm2 red, 90 degr.	30-309001005	Helukabel	E08135
-X3	5	Internal wire 6mm2 black, 90 degr.	30-309006001	Helukabel	E08138
-X3	5	Internal wire 6mm2 red, 90 degr.	30-309006005	Helukabel	
-X3	2	PVC 2*1 genummerd 1-2	STUURSTROOMKAB 2*1		
-X4	1	Accu plug small SB 175 175A Blauw	6326G5		E10741
-X4	1	Handgriep rood voor SB 175A	995G3/RED		
-X7	2	Endbracket V4 small 9708/2535	EINDSTEUN V4 CON.ACC	Wieland	E07828
-X7	7	Tension clamp terminal multi level 2*2.5	WEID ZDK 2.5	Weidmuller	E05169
-X7	1	End plate beige for ZDK 2.5 multi level	WEID ZAP/TW ZDK2.5	Weidmuller	E05171
-7CAB0	1	Wall mount end 300x300x150MM IP66	MAS 0303015	Eldon	E08442
-7CAB0	2	Cable gland M12*1.5 polyamide 50.612	WARTEL PA M12*1.5	Jacob	E08443
-7CAB0	3	Cable gland nut M12*1.5 polyamide 50.212PA	WARTEL PA M16*1.5	Jacob	E01196
-7CAB0	5	Cable gland M16*1.5 polyamide 50.616	WARTELMOER PA M16	Jacob	E07890
-7CAB0	5	Cable gland nut M16*1.5 polyamide 50.216PA	WARTELMOER PA M12	Jacob	
-11F2	1	Plug PA M12*1.5	BLINDSTOP PA M12	Cooper	E10739
-11F2	2	Mernte rated circuit breaker 100a(cooper busman)	185-100-F-01-1		
-11H8	1	Cabletag eye M6 copper 25mm2	23DE25-65V	Calpe	
-11K4	1	Contact (Albright)	BACKUP ALARM 48V		
-11K4	2	Cabletag eye M10 copper 25mm2	SWZ00/20	Calpe	E10736
-11K5	2	Endbracket V4 small 9708/2535	23DE25-10SV	Wieland	E07828
-11K5	1	relay 2P +LED+testbut.+diode 48VDC/5A	EINDSTEUN V4 CON.ACC	Omron	
-11K5	1	Clip for socket P2RF-08S	OMRON G2R-2-SND1 48DC	Omron	E05188
-11K5	1	Screwless clamp terminal socket for G2R-2	OMRON P2CM-5	Omron	E07986
-11K7	1	Contact (Albright)	OMRON P2RF-08-S	Omron	E10784
-11K7	1	Mount Bracket (Albright)	SW6J/8153		
-11M3	2	Cabletag eye M8 copper 25mm2	20/28-551A	Calpe	
-11S4	1	Red Ø40 Emergency switching off pushbutton head Ø22 latching	23DE25-85V	Schneider Electric	E08437
-11S4	1	Single contact block with body/fixing collar 1NC screw clamp	Z84-85844	Schneider Electric	B21153
-11S4	1	Sticker emergency stop yellow/red	Z84-82102	De Vries	E07832
-11S5.1	1	Selector switch head Ø22 2-position stop pul. Ronis 455	EMERGENCY STOP STICKER	Schneider Electric	E08483
-11S5.1	1	Single contact block with body/fixing collar 2NO screw clamp	Z84-862	Schneider Electric	
-11U5	1	Battery Indicator 24-80VDC with autom. cut out.	Z84-82103	Schneider Electric	
-11U5	1	Battery Indicator 24-80VDC with autom. cut out.	BATTERY INDICATOR 24-80VDC		E10723

