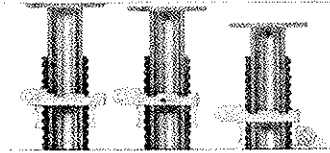


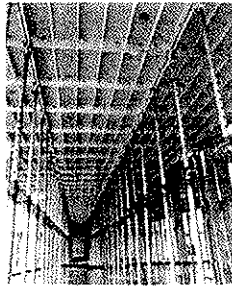
Tilladelige belastninger Europlus støtter i [kN]

Europlus støtter				
Type =>	Stål			Alu
	260 DB/DIN	350 DB/DIN	410 DB/DIN	500 DC
Varenr.	061505	061510	061520	061530
Vægt:	15.7 kg	21.1 kg	25.4 kg	23.2 kg
Længde (m):	1.54- -2.60 m	1.98- -3.50 m	2.34- -4.10 m	2.79- -5.0 m
1.50 m	38.0			
1.60 m	38.0			
1.70 m	38.0			
1.80 m	38.0			
1.90 m	38.0			
2.00 m	36.5	30.4		
2.10 m	34.0	30.4		
2.20 m	33.0	30.4		
2.30 m	31.0	30.4	33.5	
2.40 m	29.0	30.4	33.5	
2.50 m	26.0	30.4	33.5	
2.60 m	26.0	30.4	33.5	
2.70 m		30.4	33.5	
2.80 m		30.4	33.5	40.0
2.90 m		30.4	33.5	40.0
3.00 m		30.4	33.5	40.0
3.10 m		30.4	33.5	40.0
3.20 m		30.4	33.5	40.0
3.30 m		30.4	33.5	40.0
3.40 m		29.7	33.5	40.0
3.50 m		27.1	33.0	40.0
3.60 m			30.6	40.0
3.70 m			28.2	40.0
3.80 m			26.2	40.0
3.90 m			24.5	38.5
4.00 m			22.9	36.9
4.10 m			21.0	35.4
4.20 m				33.8
4.30 m				32.3
4.40 m				30.7
4.60 m				29.2
4.80 m				27.6
4.70 m				26.1
4.80 m				24.6
4.90 m				23.0
5.00 m				21.5

LYNSÆNKNING

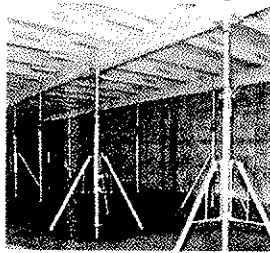


Under last Aflastet Nedsænket



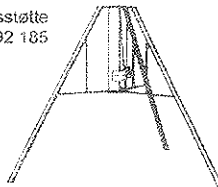
Støtter med TOPEC

eller H20 dragere



TILBEHØR

Trefod - opstillingsstøtte
Varenr. 092 185

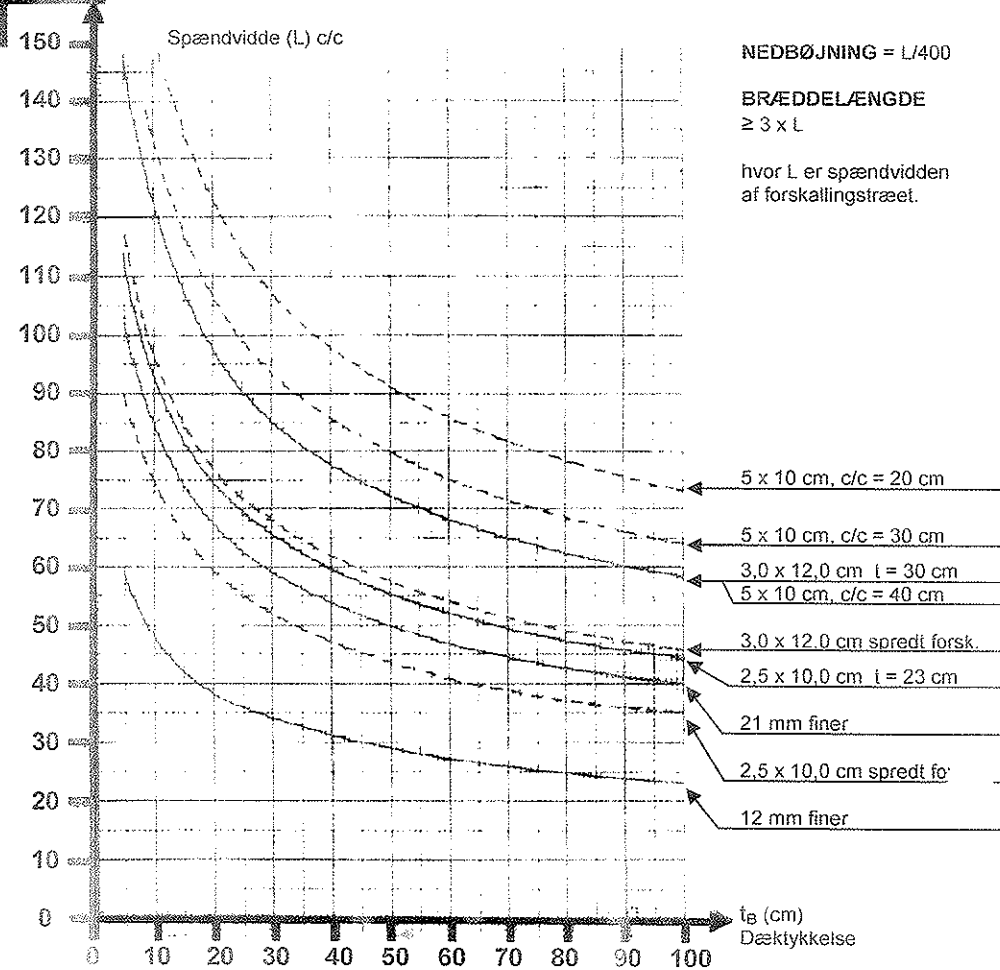


Afsværningsbøjle
Varenr. 092 173



TABEL FOR TRÆ

Maximal understøtningsafstand for forskallingstræ når træet er dimensionsgivende.



Harsco Infrastructure Danmark A/S

Lucernemarken 9, 3520 Farum
Telefon 70 13 31 00
Telefax 70 13 31 13

Irlandsvej 2, 8450 Hammel
Telefon 70 13 31 00
Telefax 86 96 07 50

E-mail info@harsco-i.dk

Internet www.harsco-i.dk